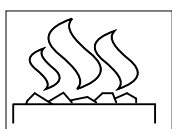


# SCHEMA PRODOTTO/*DATASHEET*

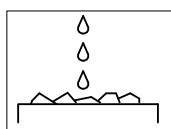


## Tecnologie/*Technologies*

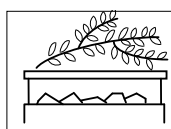
Sauna Finlandese  
*Finnish sauna*



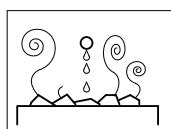
Sauna Bio  
*Bio sauna*



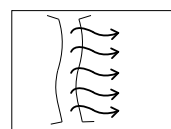
Sauna alle erbe  
*Herbal sauna*



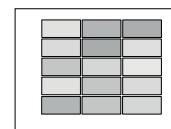
Sauna agli aromi  
*Aromas sauna*



Sauna infrarosso  
*Infrared sauna*



Sauna al sale  
*Salt sauna*

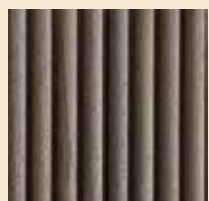


## Allestimento di serie/*Standard configuration*

1. Struttura portante costituita da montanti e traversi di Abete con materiale isolante.  
*Cabin structure consisting of Spruce wooden uprights and beams with insulating material.*
2. Rivestimento interno con doghe cannettate di Abachi o Thermowood, o pannelli Hemlock o Thermowood Frassino, esterno in pannello OSB.  
*Interior finishing with Abachi or Thermowood wood curved tongue and groove, or Hemlock or Thermowood Ash panels, exterior in OSB panel.*
3. Panca a due livelli in Abachi o Thermowood.  
*Double level bench in Abachi or Thermowood.*
4. Copristufa di protezione in Abachi o Thermowood.  
*Protection cover heater in Abachi or Thermowood.*
5. Riscaldatore elettrico con pietre per Sauna finlandese.  
*Electric heater with stones for Finnish sauna.*
6. Griglia di sicurezza per protezione al fuoco con spegnimento automatico della stufa.  
*Safety grid for fire protection with automatic heater switching off.*
7. Rivestimento in gres porcellanato dietro la stufa, ignifugo e inalterabile al calore.  
*Cladding behind the heater in Porcelain Tiles fireproof and unalterable linings with heat.*
8. Porta da 90 cm in vetro temperato da 10 mm.  
*90 cm door in 10 mm tempered glass.*
9. Maniglione in acciaio inox, con interno in legno.  
*Stainless steel pull handle, with wooden interior.*
10. Cerniere oleodinamiche per porta in vetro che consentono la chiusura automatica, costante e controllata della porta.  
*Hydraulic hinges for glass doors that allow automatic, constant and controlled closing of the door.*
11. Sensore di temperatura.  
*Temperature sensor.*
12. Frontale totalmente vetrato.  
*Totally glass front.*
13. Cornice in legno o Corian.  
*Frame in wood or Corian.*
14. Cromoterapia o led luce bianca calda sotto panca.  
*Chromotherapy under bench or warm white led light.*
15. Cromoterapia o led luce bianca calda.  
*Chromotherapy on the ceiling or warm white led light.*
16. Pulsante d'emergenza.  
*Emergency button.*
17. Poggiatesta.  
*Headrest.*
18. Secchiello e mestolo.  
*Bucket and ladle.*
19. Clessidra.  
*Hourglass.*
20. Combi termo-igrometro  
*Combi thermo-hygrometer.*

# Materiali/*Materials*

## Finitura pareti *Finishing panels*



Doghe1.TW

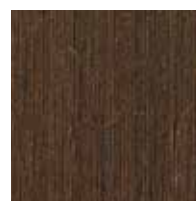


Doghe1.AB

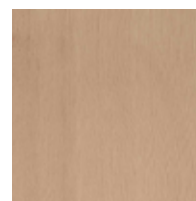


Plus

## Finitura pareti *Finishing panels*



Thermowood  
Ash.52



Hemlock 0.1

## Panche *Benches*

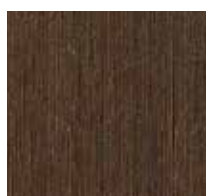


Thermowood Ash.52



Abachi.50

## Cornici legno *Wood Frames*



Thermowood Ash.52



Abachi.50

## Cornici in Corian *Corian frames*



Corian White.20

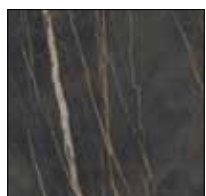


Corian Black.21

## Rivestimento ceramico sopra e retro-stufa *Coating ceramic above and behind heater*



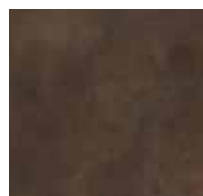
Calacatta oro.62



Noir Desir.63



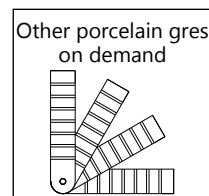
Ossido nero.67



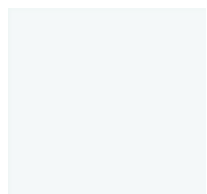
Ossido bruno.68



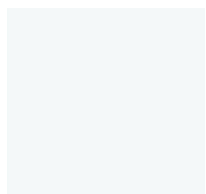
Ossido verderame.69



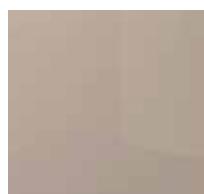
## Frontale vetro *Glass front*



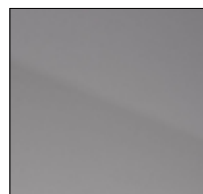
Clear glass.standard



Frosted Glass.77



Bronzed glass.78



Grey glass.79

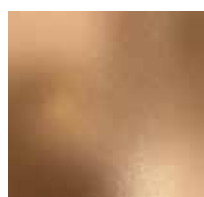
## Accessori e ferramenta *Accessories and hardware*



Chrome/Stainless  
Steel.Standard

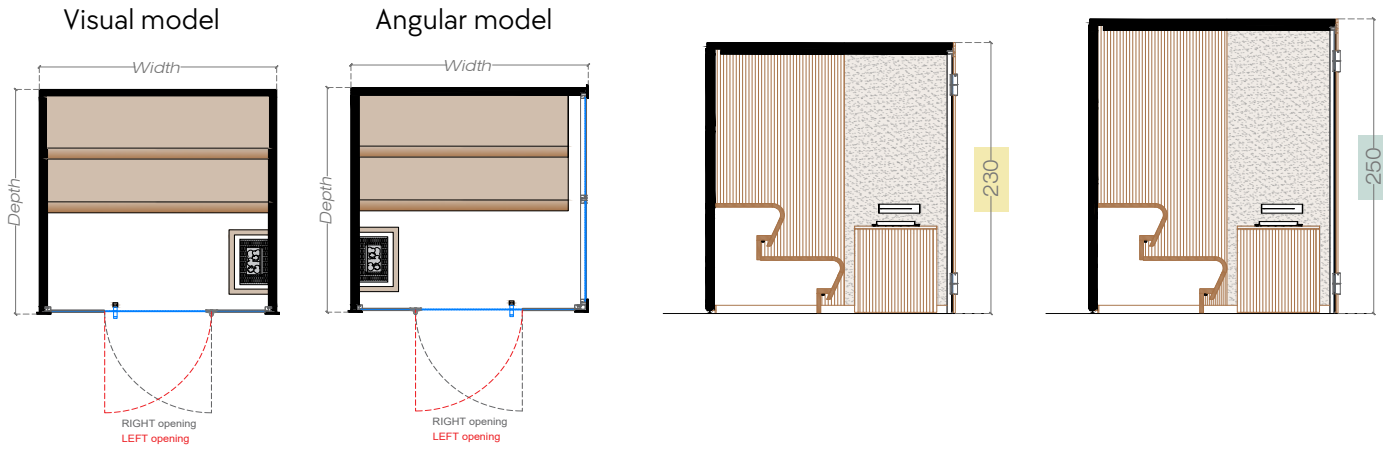


Black.38



Rose Gold.39

# Layouts



Be spoke layouts available

DxW	150	200	250	300	350	400	
150	2 people, 4.5kW	3 people, 6kW					H. 230
200		3 people, 7.5kW	4 people, 9kW	5 people, 12kW			
250			4 people, 12kW	8 people, 15kW			
300				10 people, 18kW	10 people, 18kW	12 people, 24kW	H. 250
350					10 people, 24kW		
400						15 people, 27kW	